

APPENDIX E

*Assessor's Parcel Maps for
Fiscal Year 2023-24*

ASSESSOR'S MAP 986

Code Area Nos. 26-012 26-021

26-005 26-013
26-014
26-015(A) Map of the Property of the
Estate of E. A. Dougherty. (Bk. 8 Pg. 75)

(B) Rancho San Ramon (J.M. Amador) (Pat. Bk. "A" Pg. 171)

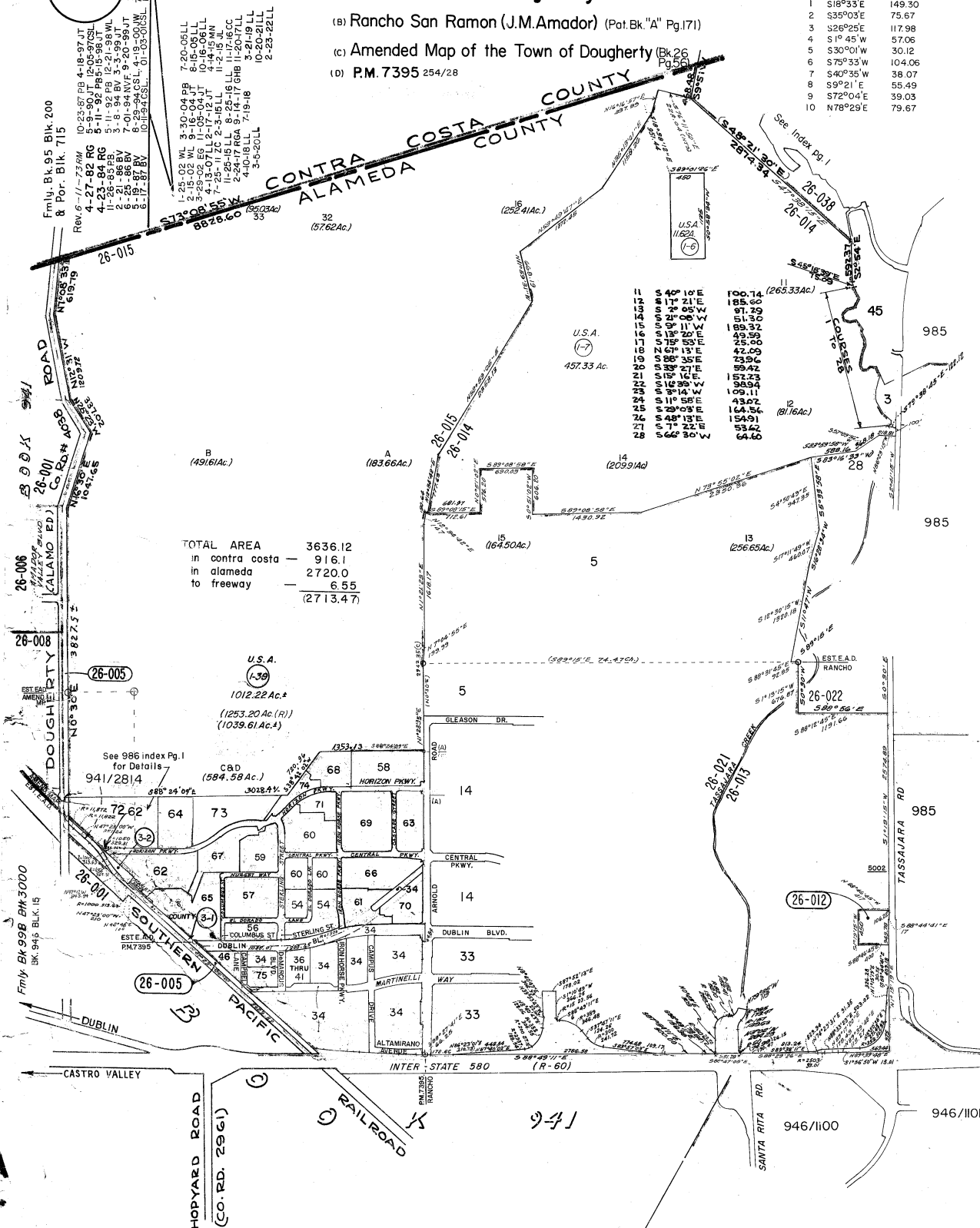
(C) Amended Map of the Town of Dougherty (Bk. 26 Pg. 56)

(D) P.M. 7395 254/28

NO. COURSE DISTANCE

1	S18°33'E	149.30
2	S35°03'E	75.67
3	S26°25'E	117.98
4	S1°45'W	57.06
5	S30°01'W	30.12
6	S75°33'W	104.06
7	S40°35'W	38.07
8	S9°21'E	55.49
9	S72°04'E	39.03
10	N78°29'E	79.67

Scale: 1" = 1000'



ACM 48-47,51

Ref. Case 5-2-1, 5-2-2, R.S.385(Pat. 1-4)(R.S. 8 Pg. 27) R S. 1060 16/22, PM. 10586 354/59-62

Ind. 1
Dwn. 9
HP. 11-13

56

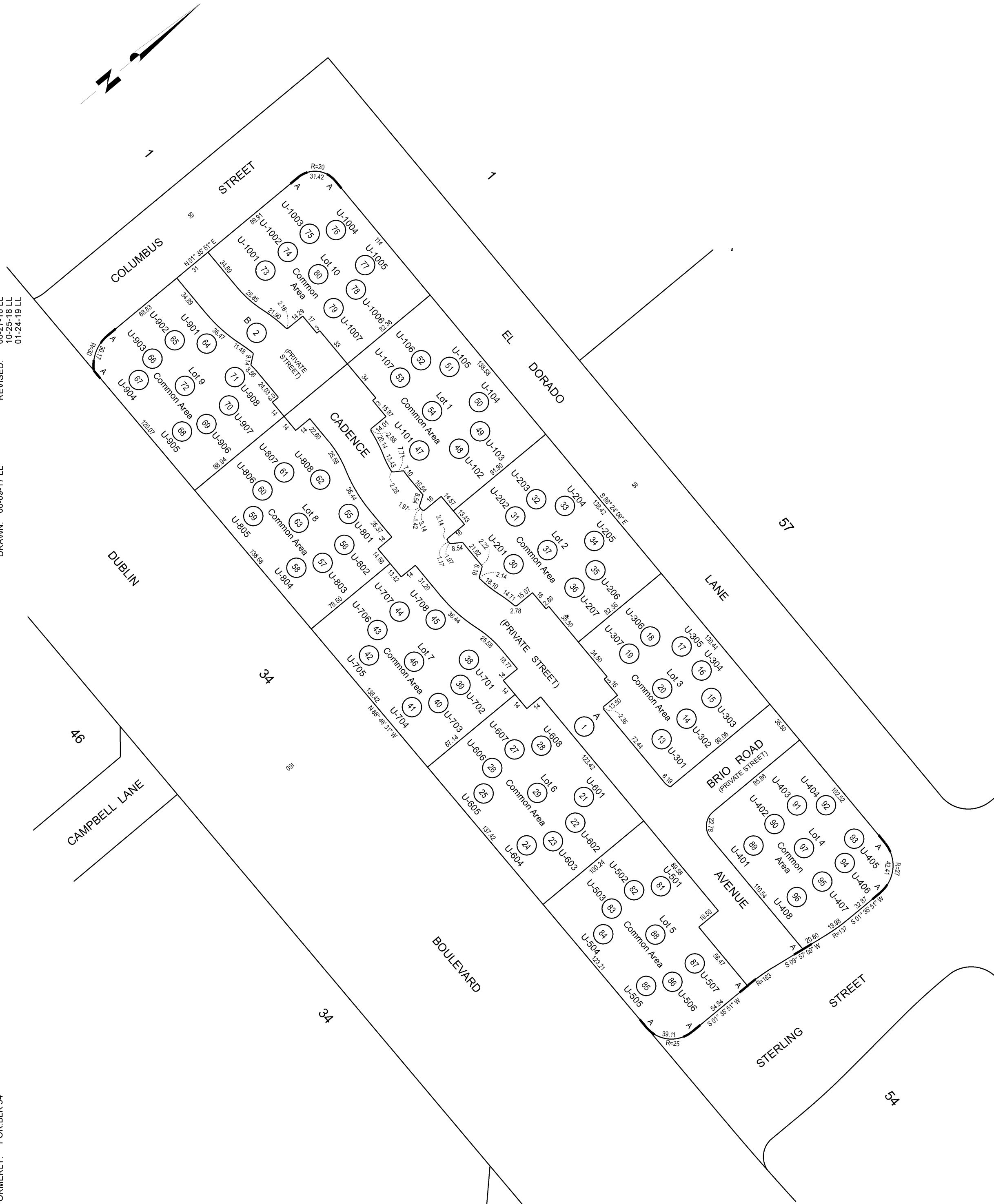
SCALE: 1" = 60'

(A) TR. 8307 345/83-88

REVISED: 08-27-18 LL
10-25-18 LL
01-24-19 LL

DRAWN: 08-09-17 LL

FORMERLY: POR.BLK 54



ASSESSOR'S MAP 986

Code Area Nos. 26-015

57

SCALE: 1" = 60'

- (A) TR. 8150 341/6-10 (D) Map of the Property of the Estate of E.A. Dougherty 8/75
(B) TR. 8308 345/89-93 (E) TR. 8368 357/77-83
(C) TR. 8375 353/13-16

TT 16-16-11-17 LL
04-10-10-18 LL
07-02-18 LL
02-11-11-11

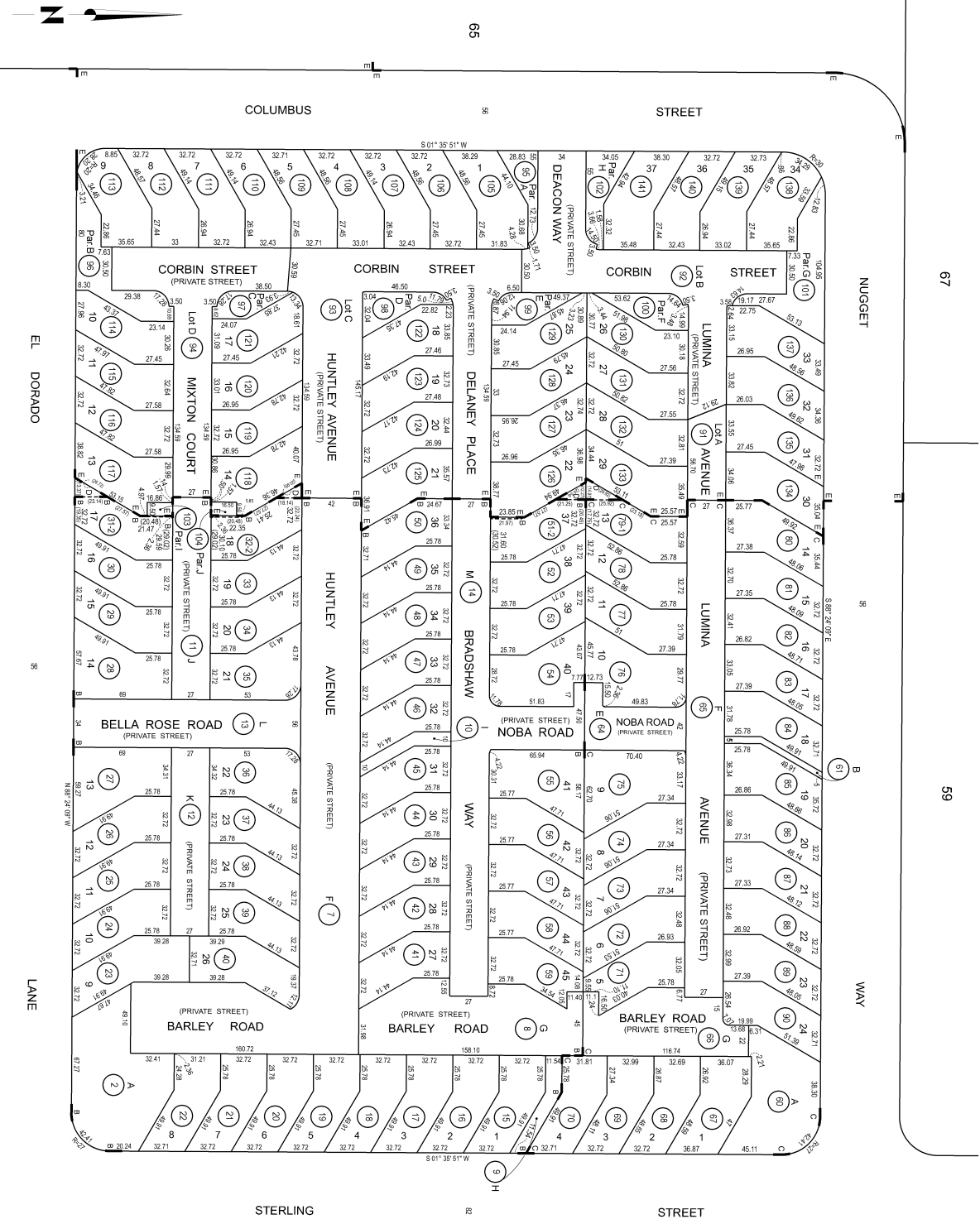
REVISD: 08-15-17-17 LL

DRAWN: 08-15-17-17 LL

STERLING STREET

FORMERLY: 54

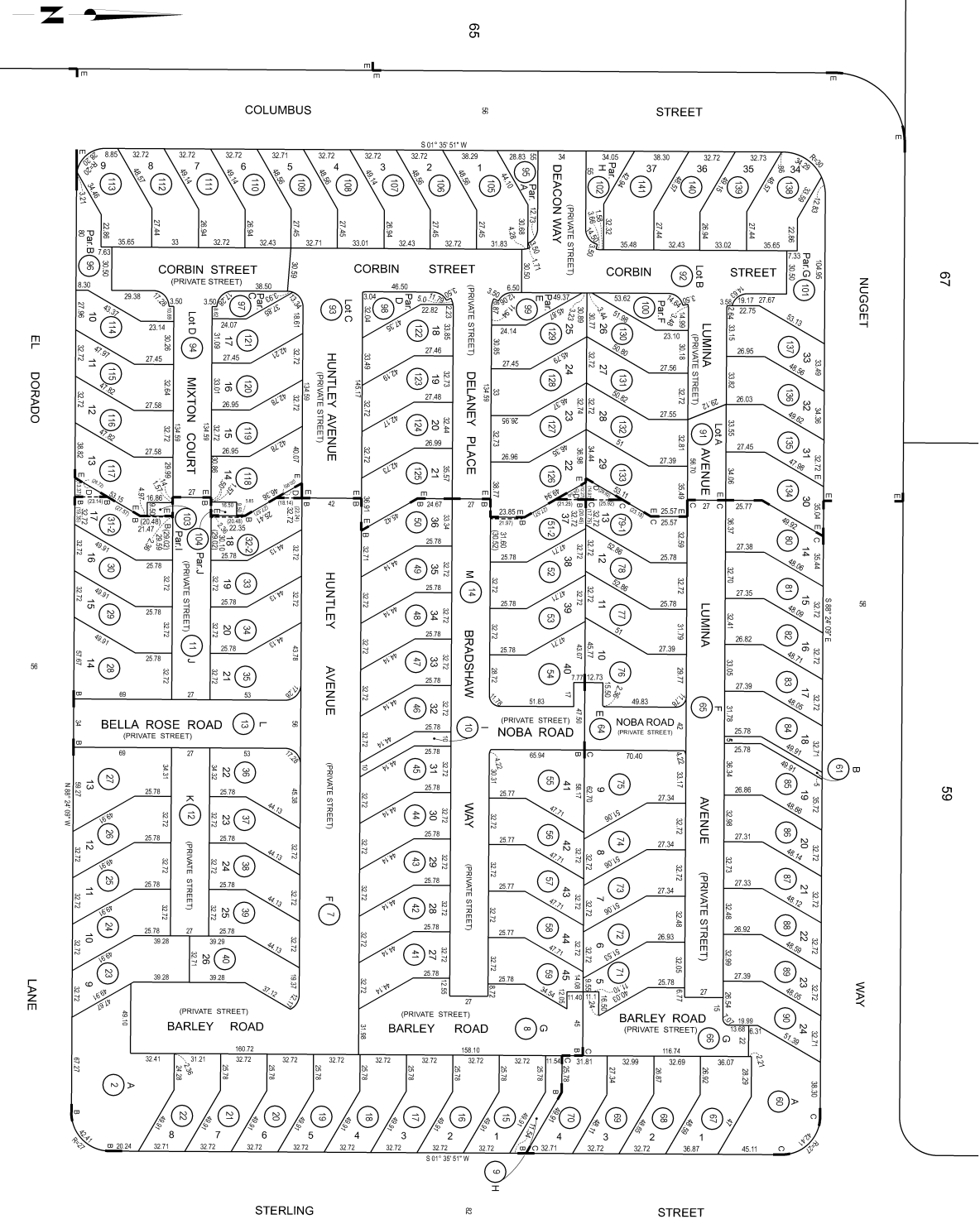
TRA: 025 B



STERLING STREET

FORMERLY: 54

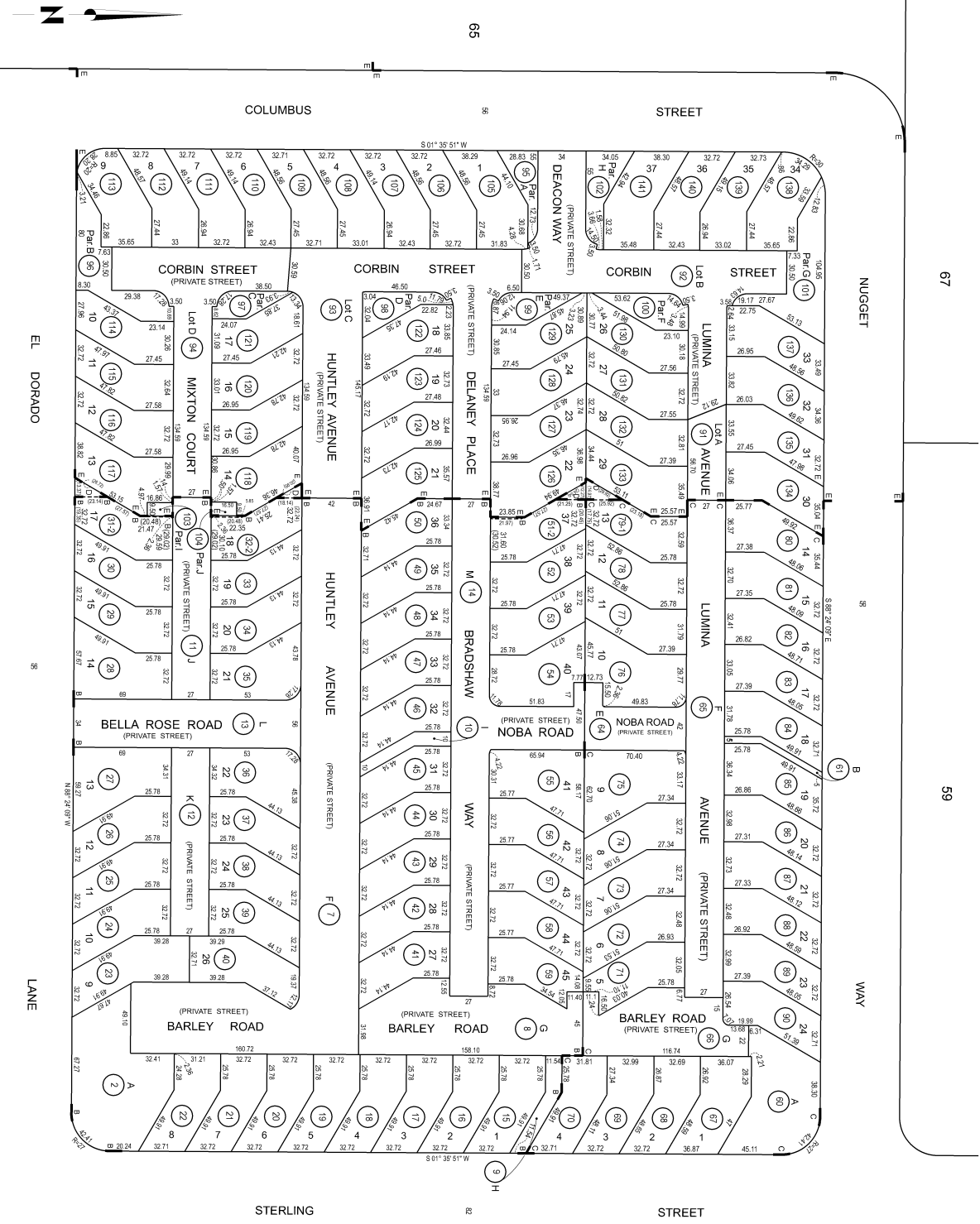
TRA: 025 B



STERLING STREET

FORMERLY: 54

TRA: 025 B



STERLING STREET

FORMERLY: 54

TRA: 025 B

ASSESSOR'S MAP 986

Code Area Nos. 26-015

(A) TR. 8309 349/26-35

58

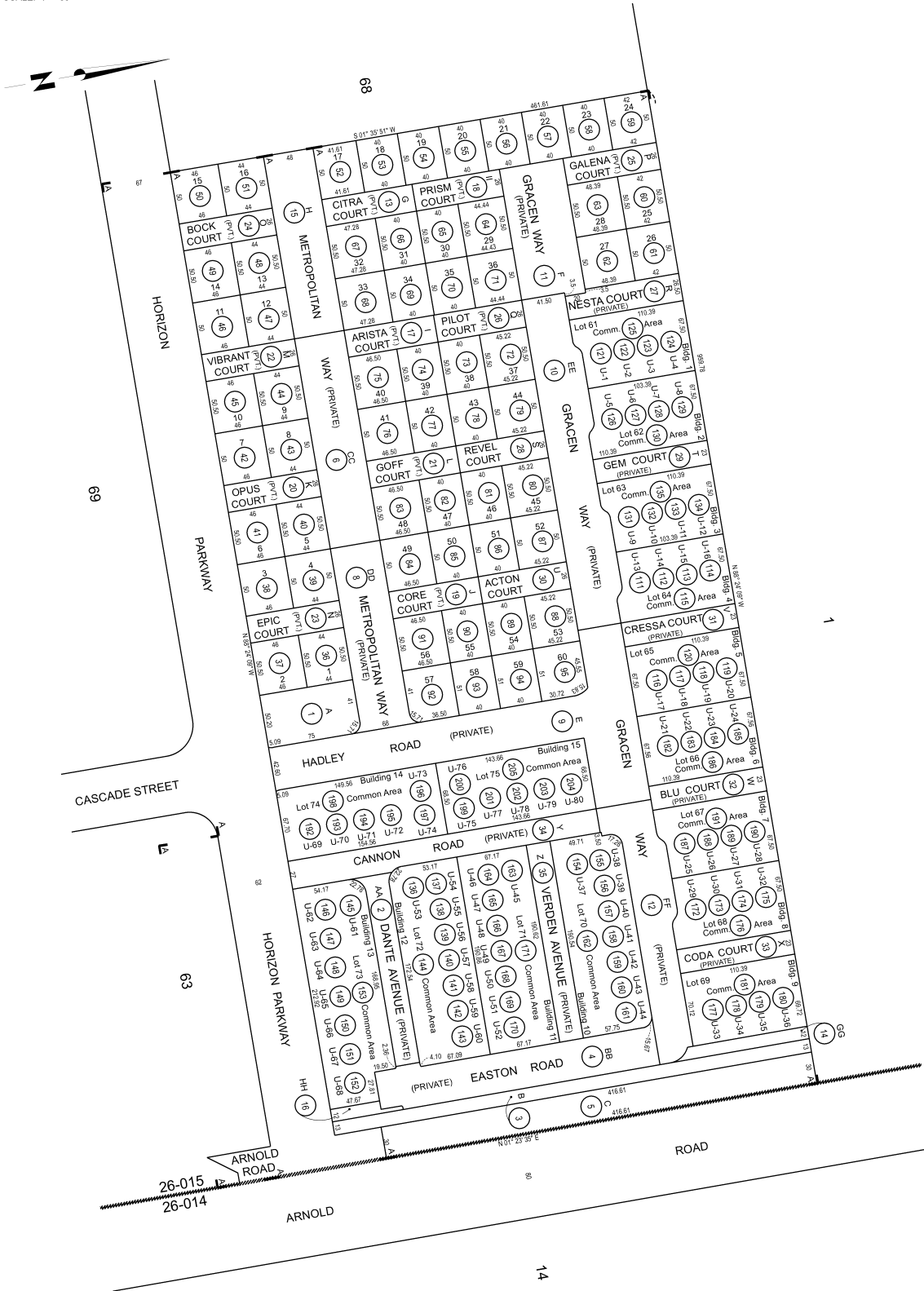
SCALE: 1" = 80'

04-09-18 LL
10-26-18 LL
03-06-19 LL
07-01-19 LL
05-11-20 CL

REVISÉ:

DRAWN: 11-17-17 LL

FORMERLY: POR.BLK.1



ASSESSOR'S MAP 986

Code Area Nos. 26-015

59

SCALE: 1" = 60'

(B) TR. 8366 355/45-50

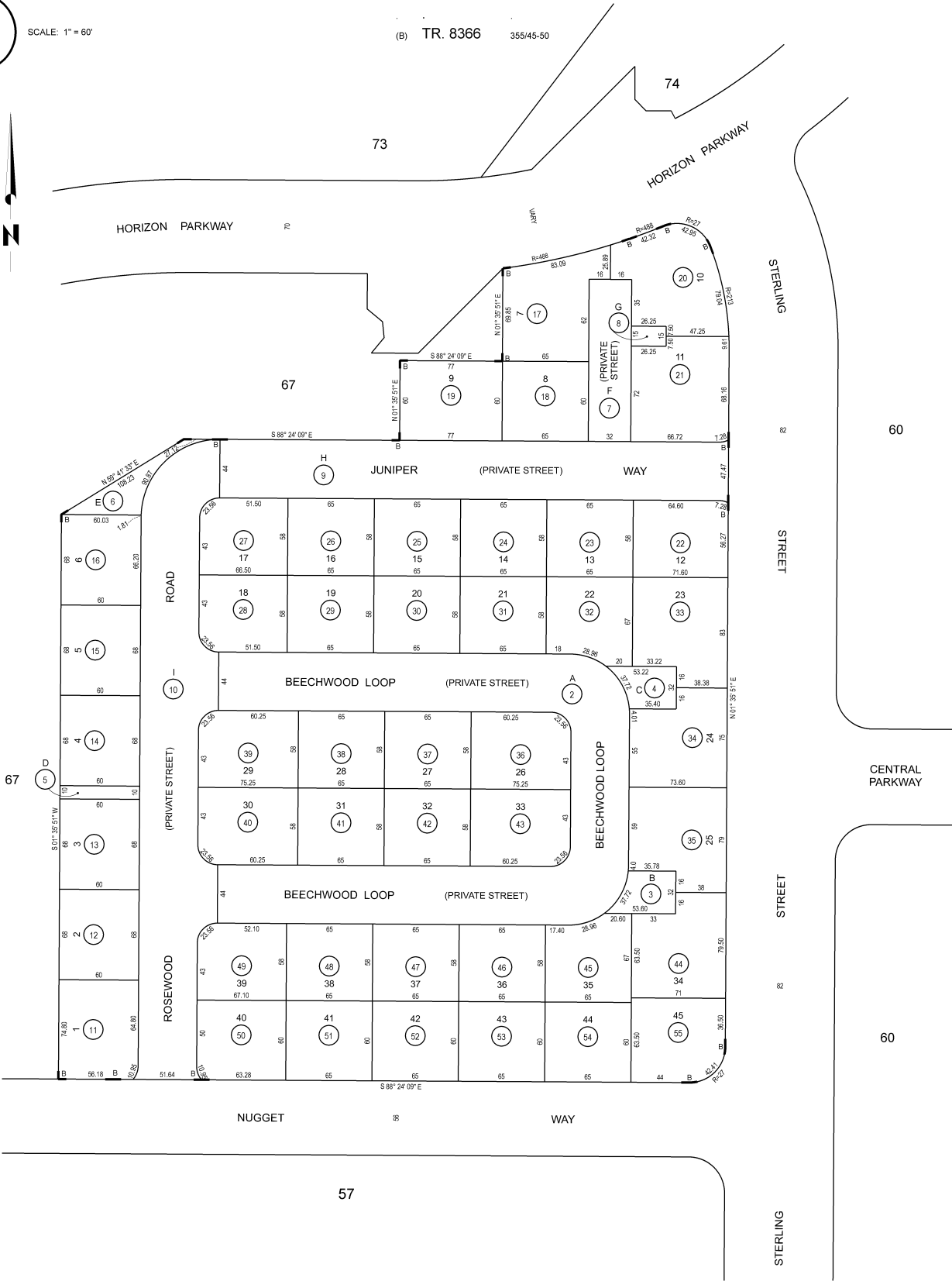


04-23-18 LL
09-07-18 LL
03-06-19 LL
06-12-20 CL
09-23-21 LL

REVISED:

DRAWN: 04-03-18 LL

FORMERLY: FOR BLK. 1



ASSESSOR'S MAP 986

Code Area Nos. 26-015

60

SCALE: 1" = 80'

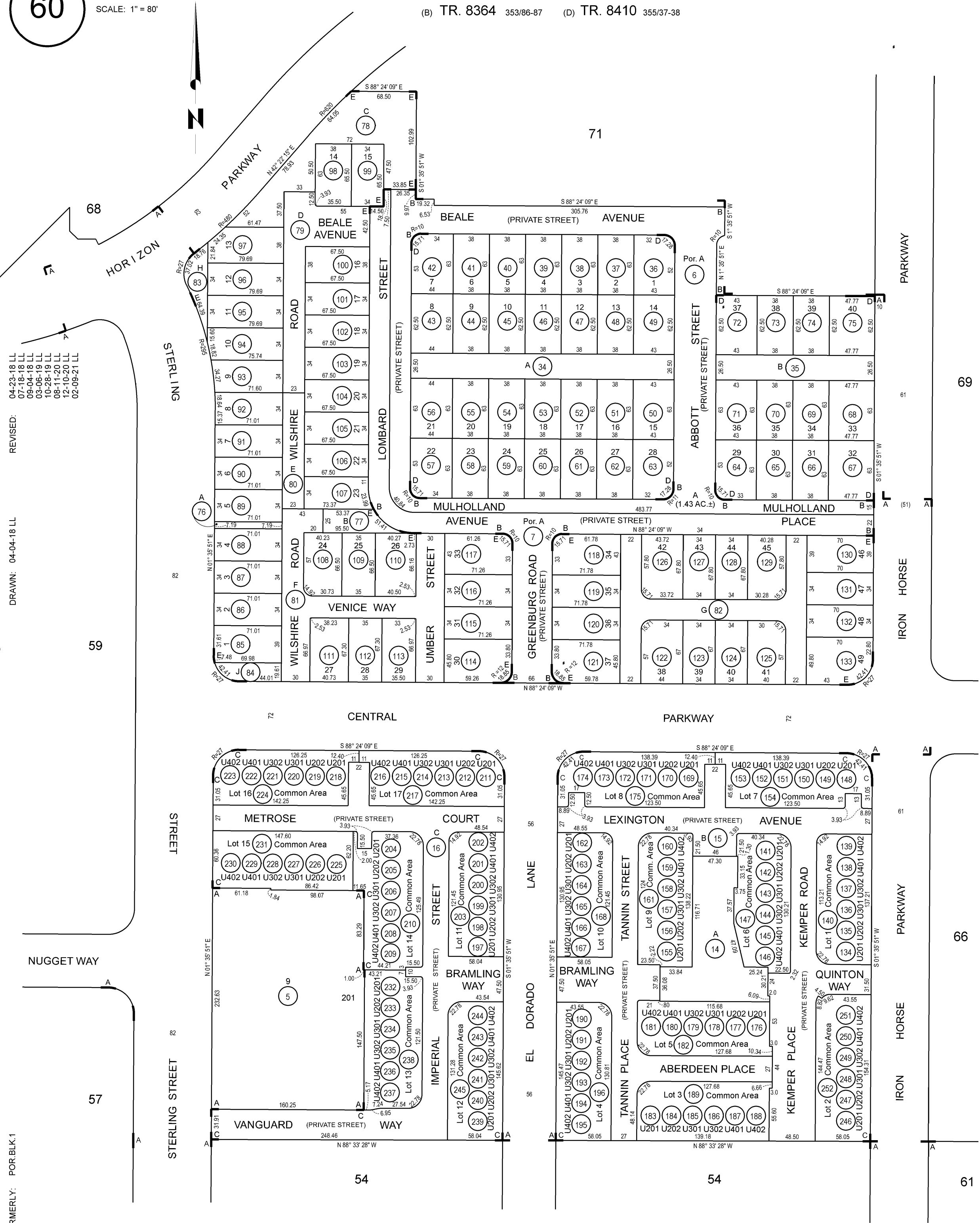
- (A) TR. 8382 351/60-68
- (C) TR. 8363 353/88-91
- (E) TR. 8411 355/39-44
- (B) TR. 8364 353/86-87
- (D) TR. 8410 355/37-38

04-23-18 LL
07-18-18 LL
09-04-18 LL
03-06-19 LL
10-28-19 LL
08-11-20 LL
12-10-20 LL
02-09-21 LL

REVISED:

DRAWN: 04-04-18 LL

FORMERLY: POR.BLK.1



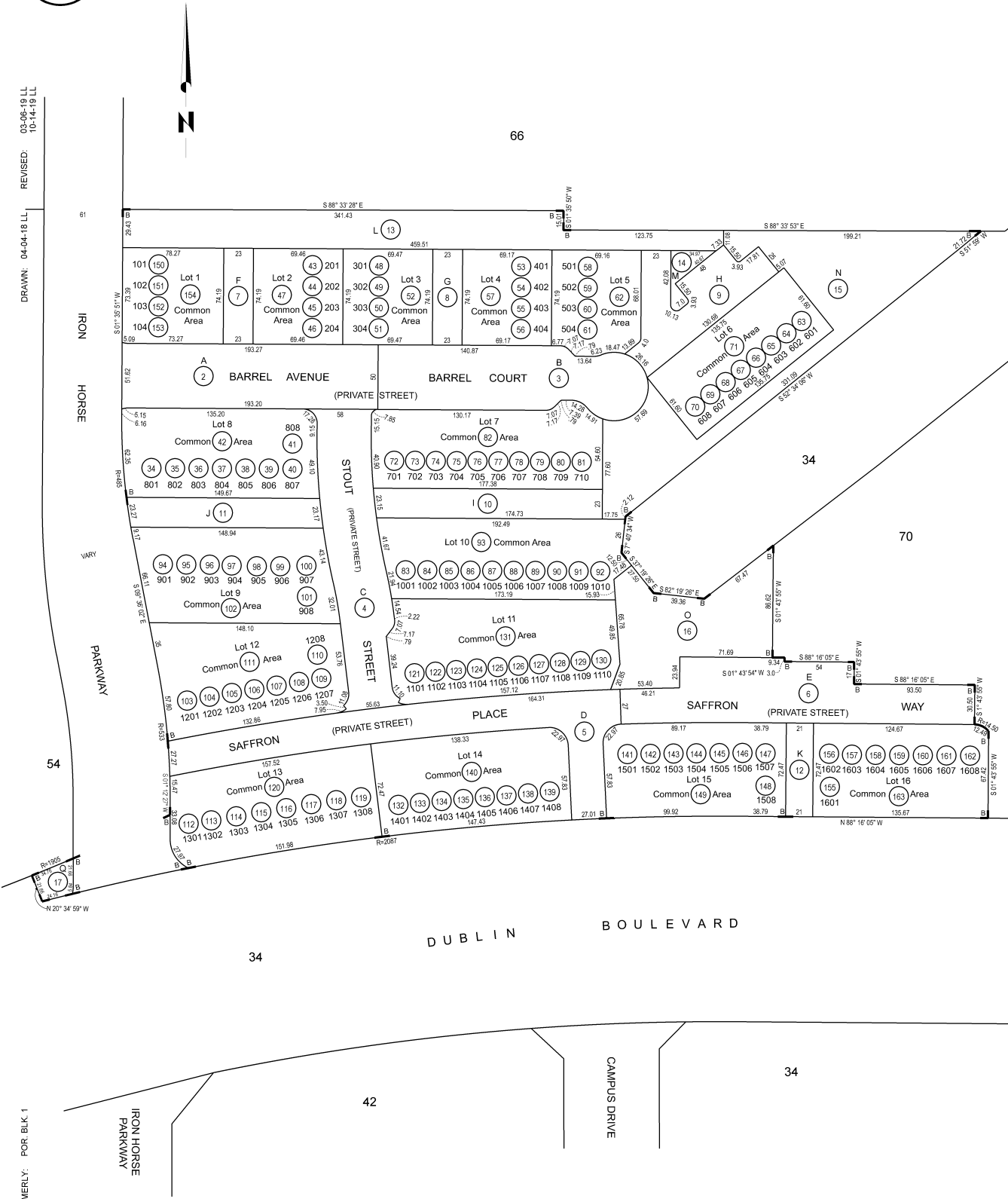
ASSESSOR'S MAP 986

Code Area Nos. 26-015

61

SCALE: 1" = 60'

(B) TR. 8360 357/47-52



ASSESSOR'S MAP 986

Code Area Nos. 26-015

58

(B) TR. 8361 355/1-3

(C) TR. 8362 357/84-87

63

SCALE: 1" = 60'

HORIZON

62

PARKWAY

REVISED:
07-19-18 LL
03-21-19 LL
01-16-20 LL
07-07-21 LL
08-16-22 LL

DRAWN: 04-09-18 LL

FORMERLY: POR. BLK. 1

TRA: 025 B

REF: TR.8309 349/26-35; TR.8382 351/60-68

HPN: 130

IND PG: 1

14

66

ASSESSOR'S MAP 986

Code Area Nos. 26-015

(B) TR. 8367 359/20-27

66

SCALE: 1" = 80'



REVISED: 03-05-19 LL
08-26-22 JL
10-26-22 JL

DRAWN: 02-25-19 LL

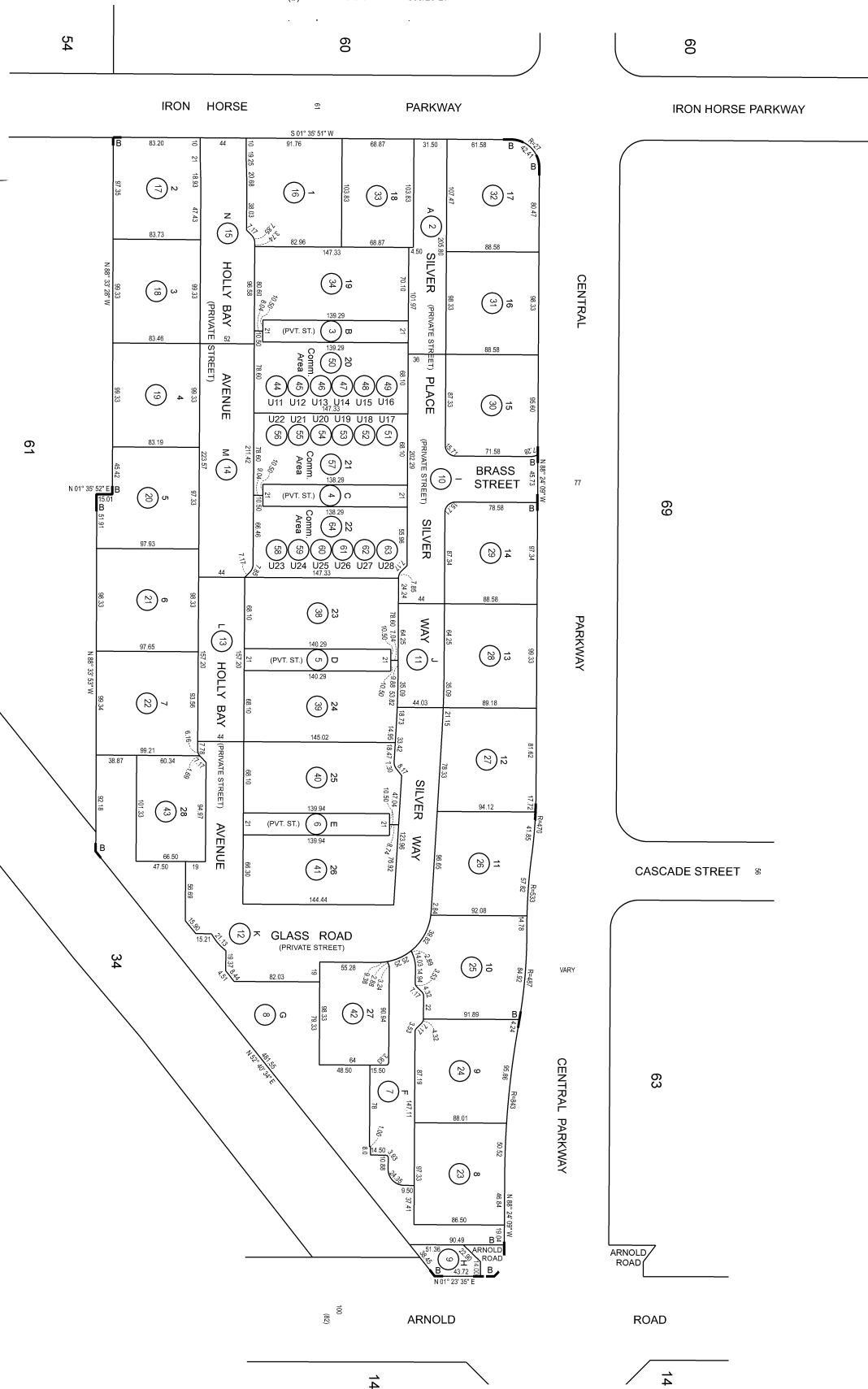
FORMERLY: POR. BLK 1

TRA: 025 B

REF: TR.8362 357/84-87

HPN: 64

IND PG: 1



ASSESSOR'S MAP 986

Code Area Nos. 26-015

69

SCALE: 1" = 80'

(A) TR. 8415 357/88-92

REVISID: 10-29-19 LL

DRAWN: 02-28-19 LL

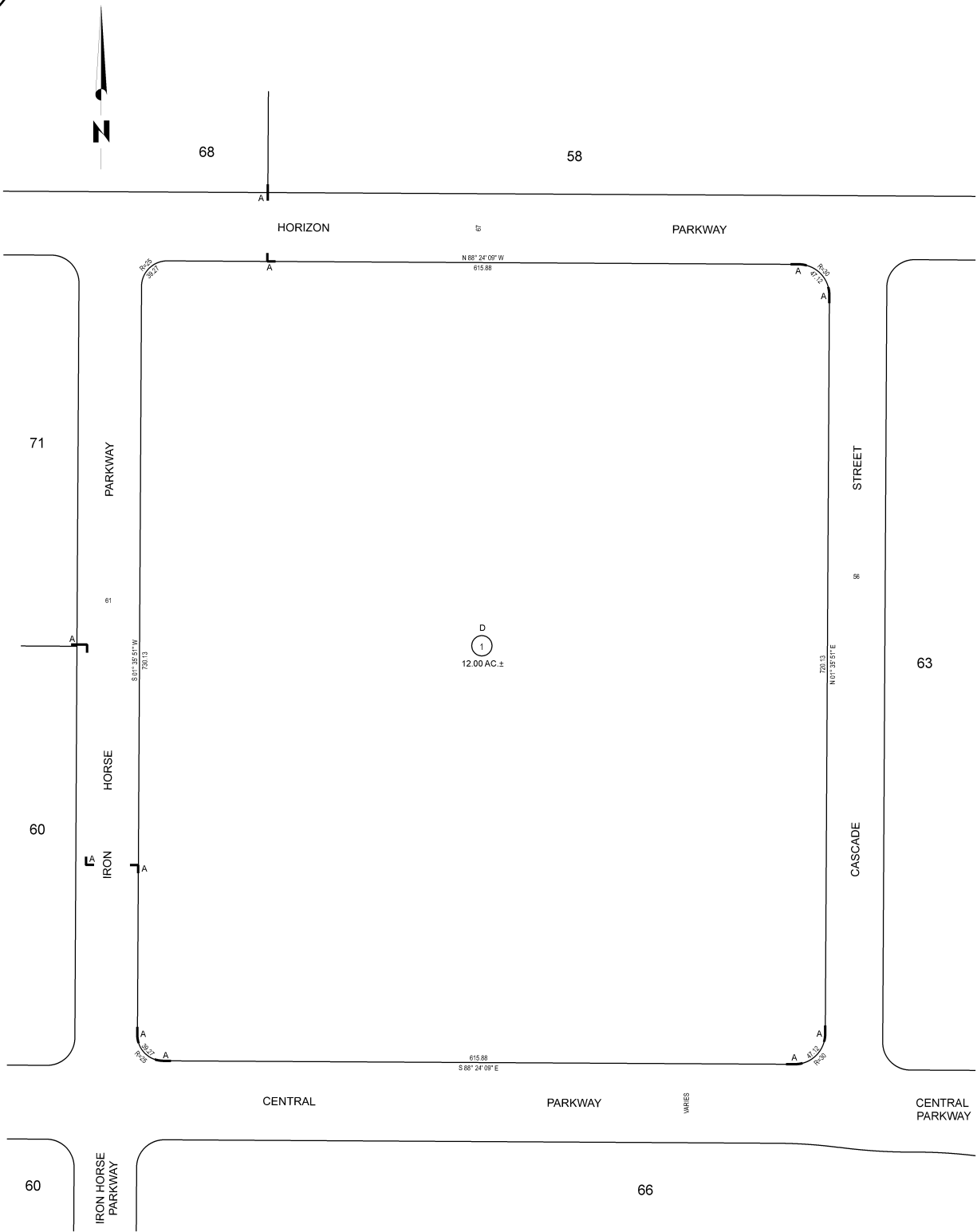
FORMERLY: FOR BLK 1 & 64

TRA: 025 B

REF:

HPN: 1

IND PG: 1



ASSESSOR'S MAP 986

Code Area Nos. 26-015

(A) TR. 8413 357/37-41

70

SCALE: 1" = 60'

REVISED: 12-16-20 LL
03-16-21 LL
08-10-21 LL

DRAWN: 03-14-19 LL

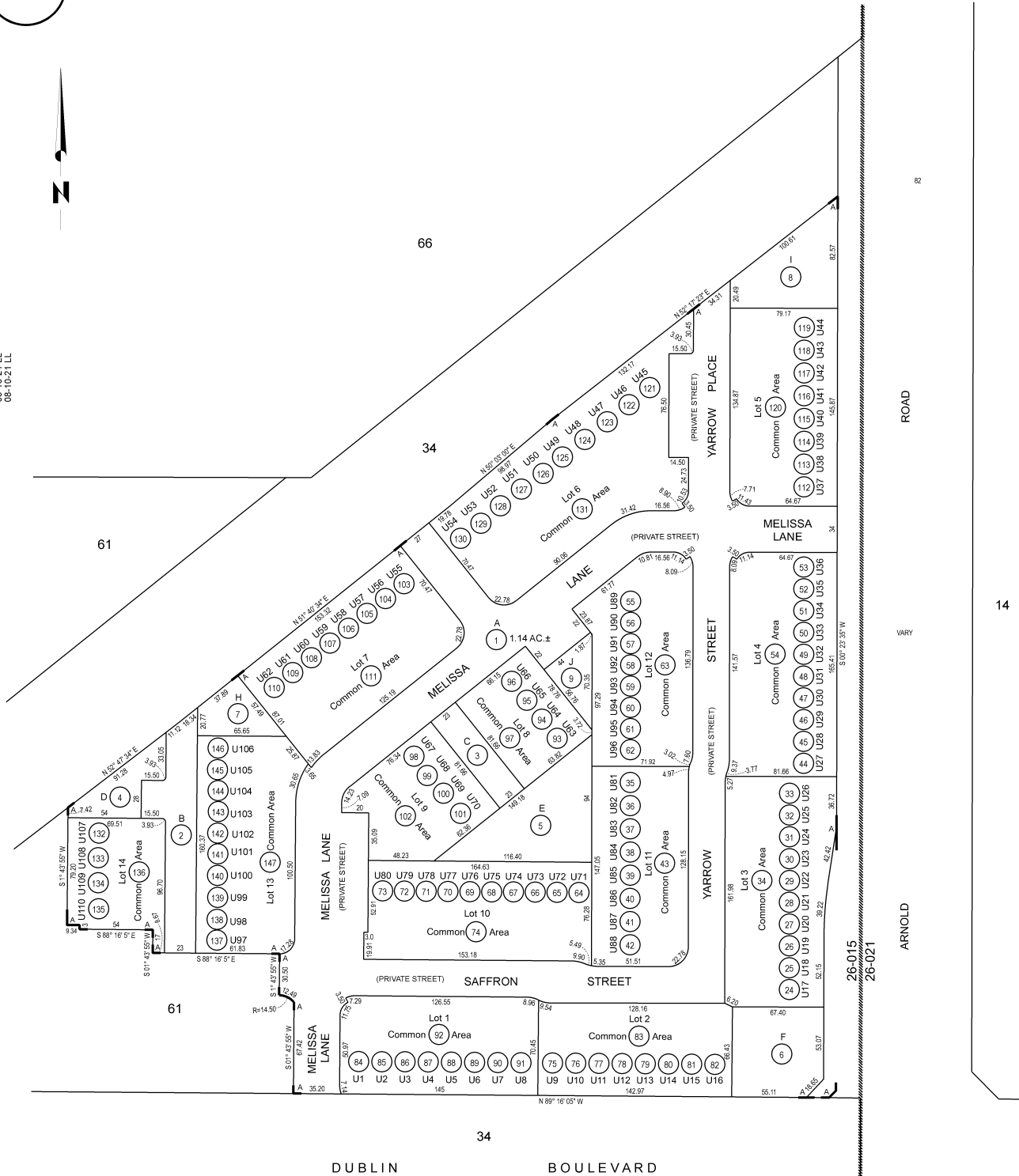
FORMERLY: POR. BLK. 34

TRA: 025 B

REF: .

HPN: 146

IND PG: 1



ASSESSOR'S MAP 986

Code Area Nos. 26-015

(A) TR. 8365 359/72-76

71

SCALE: 1" = 50'

REVISÉ:

DRAWN: 10-24-19 LL

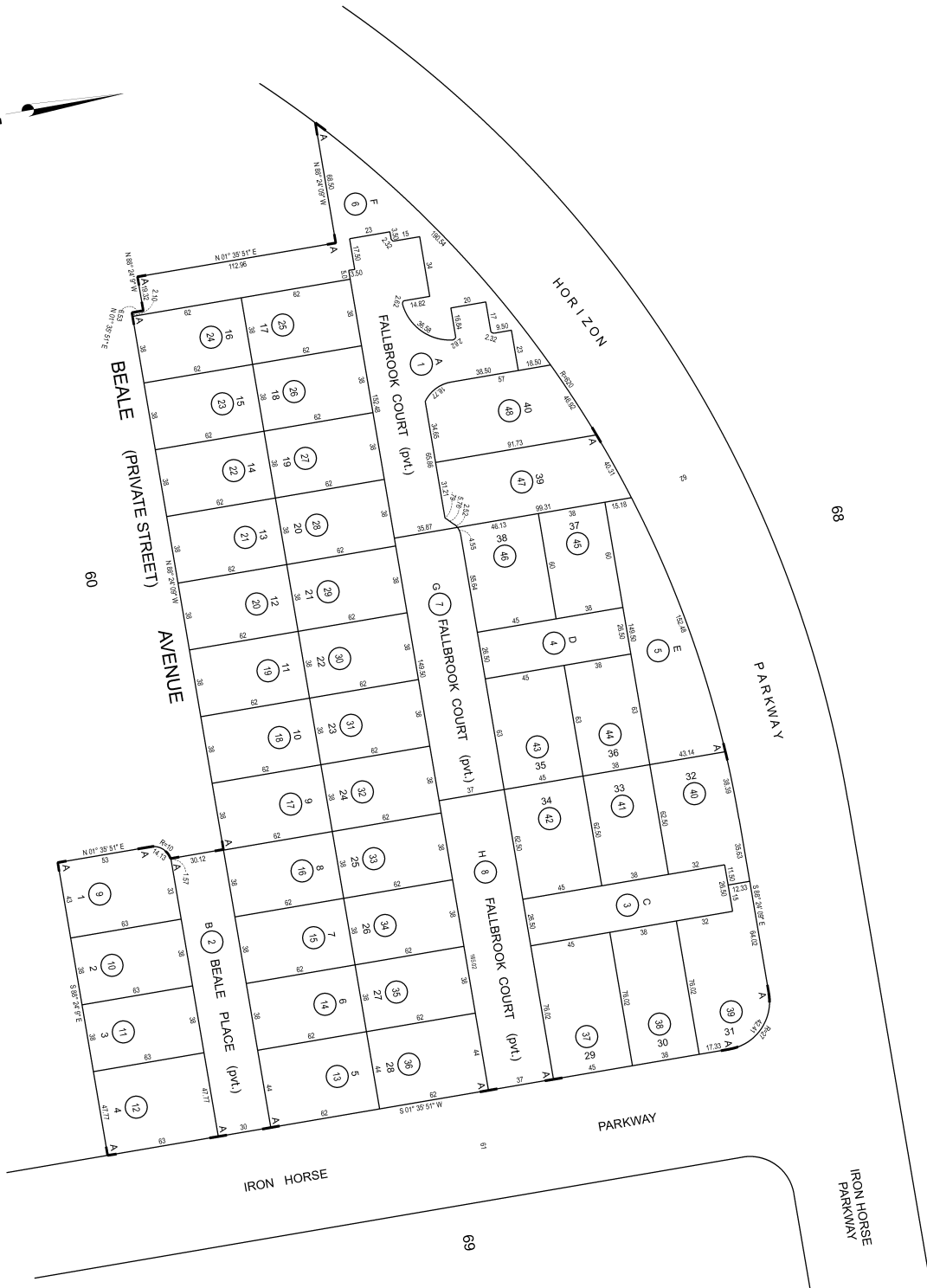
FORMERLY: POR, BLK, 60, 68

TRA: 025 B

REF: .

HPN: 48

IND PG: 1



ASSESSOR'S MAP 986

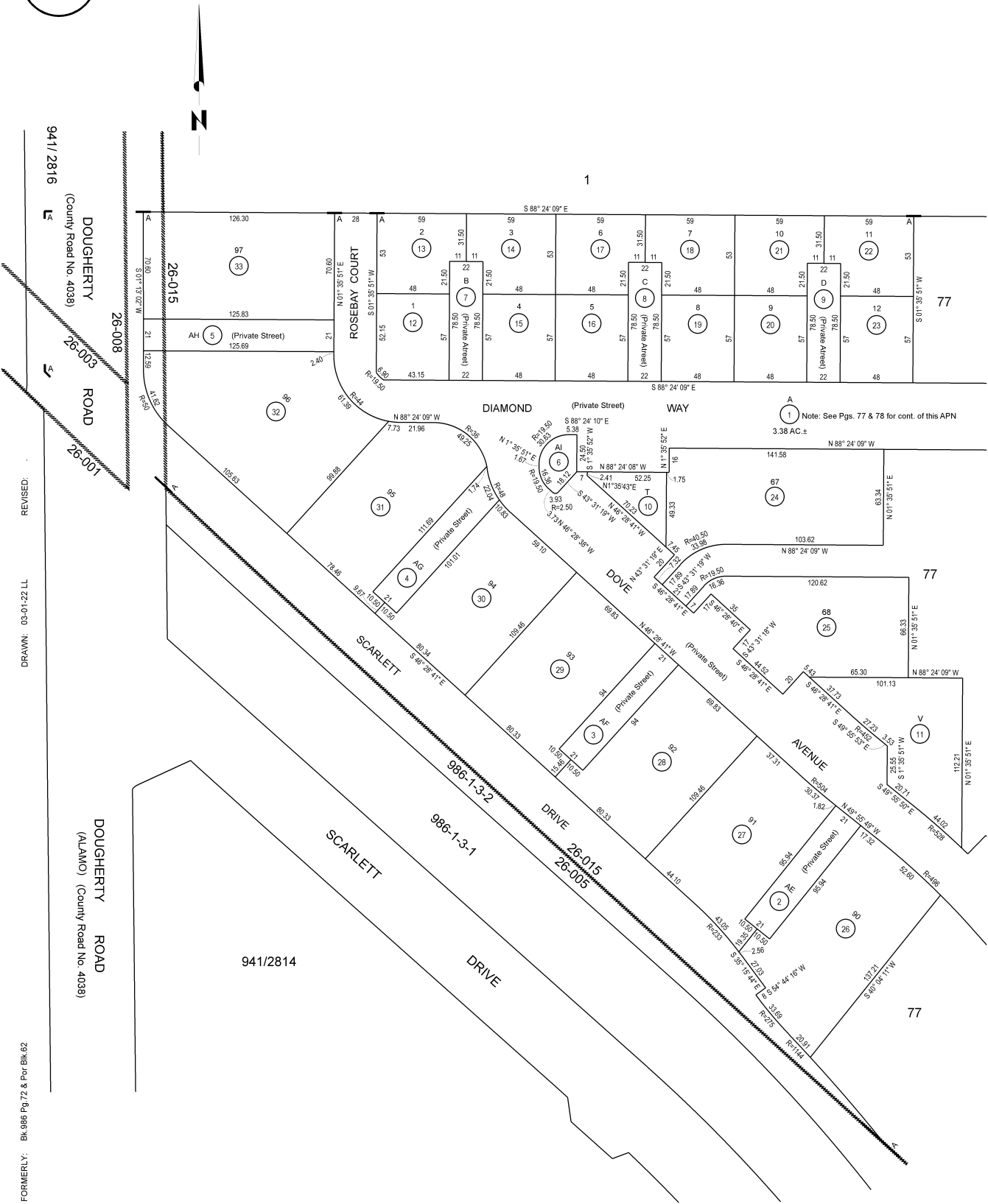
Code Area Nos. 26-015

76

SCALE: 1" = 50'

(A) TR. 8372 367/26-35

1



REVISED:

DRAWN: 03-01-22 LL

FORMERLY: BK 986 Pg 72 & Por Bk 62

ASSESSOR'S MAP 986

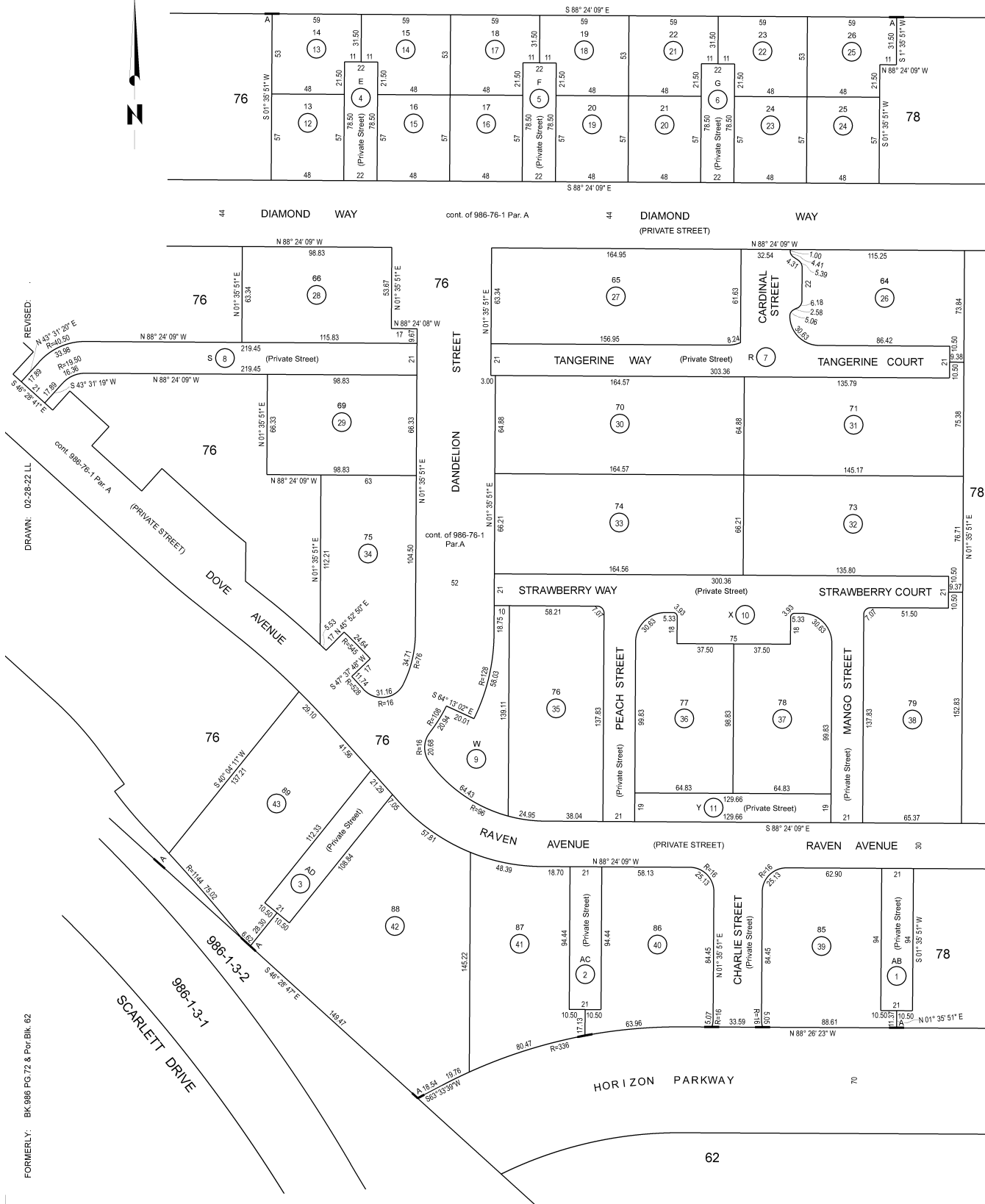
Code Area Nos. 26-015

(A) TR. 8372 367/26-35

1

77

SCALE: 1" = 50'



FORMERLY: BK.986 PG.72 & Por.Blk. 62

TRA: 025 B

REF: .

HPN: 43

IND PG: 1

ASSESSOR'S MAP 986

Code Area Nos. 26-015

78

SCALE: 1" = 50'

(A) TR. 8372 367/26-35

1

