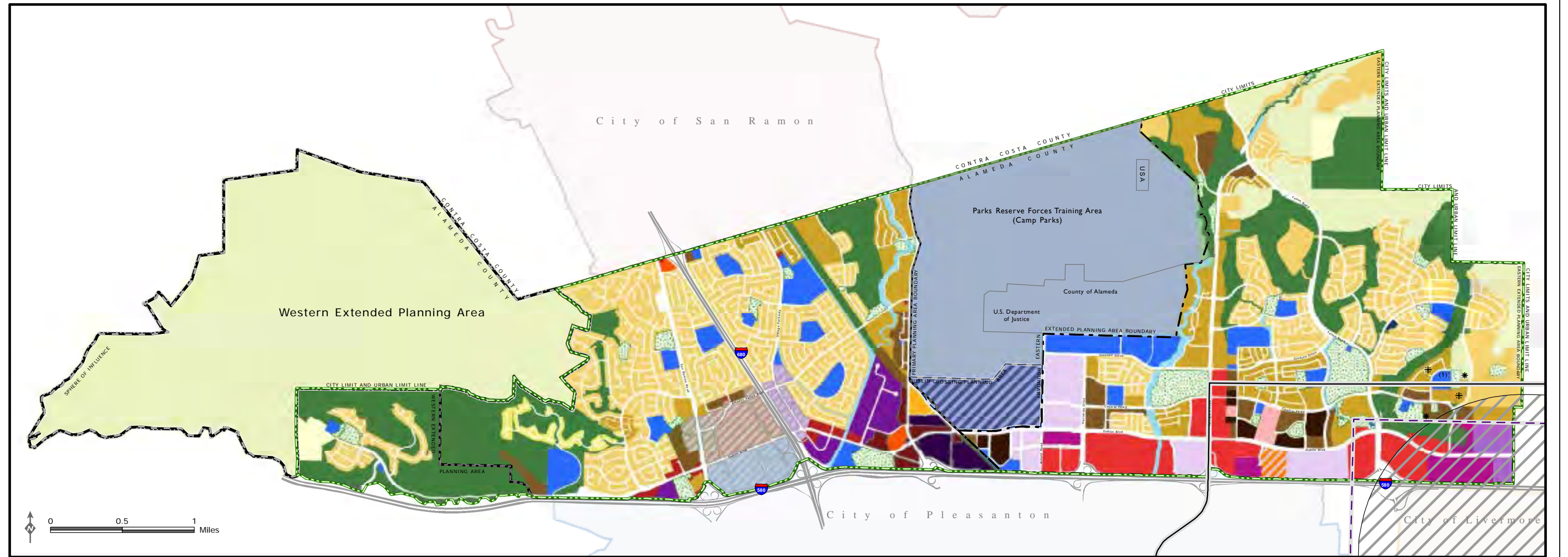




DUBLIN GENERAL PLAN LAND USE

(Figure 1-1)
October 6, 2015



Public/Semi-Public/Open Space

- Regional Park
- Parks/ Public Recreation
- Open Space
- Stream Corridor
- Public Lands
- Public / Semi-Public
- Semi-Public

Commercial/Industrial

- General Commercial
- Retail/Office
- Retail/Office and Automotive
- Neighborhood Commercial
- General Commercial/Campus Office
- Campus Office
- Industrial Park
- Business Park/Industrial
- Business Park/Industrial and Outdoor Storage
- Mixed Use
- Mixed Use 2/Campus Office
- Medium/High-Density Residential and Retail Office

Specific Plan Districts

- Downtown Dublin - Village Parkway District
- Downtown Dublin - Transit-Oriented District
- Downtown Dublin - Retail District
- Dublin Crossing

Residential

- Rural Residential/Agriculture (1 Unit per 100 Gross Residential Acres)
- Estate Residential (0.01 - 0.8 du/ac)
- Low-Density Single Family (0.5 - 3.8 du/ac)
- Single Family Residential (0.9 - 6.0 du/ac)
- Medium-Density Residential (6.1 - 14.0 du/ac)
- Medium/High-Density Residential (14.1 - 25.0 du/ac)
- High-Density Residential (25.1+ du/ac)

- Airport Influence Area (AIA)/Overlay Zoning District
- Airport Protection Area (APA)
- Airport Safety Zone 6
- Western Extended Planning Area Boundary
- Primary Planning Area Boundary
- Eastern Extended Planning Area Boundary
- Dublin Crossing Planning Area Boundary

- City of Dublin
- Sphere of Influence
- City of Livermore
- City of Pleasanton
- City of San Ramon

* The location of Semi-Public sites on the Chen, and Croak properties of Fallon Village will be determined at the time of the Stage 2 Development Plan approval. The respective sizes of the sites will be 2.5 net acres, and 2.0 net acres on the Chen and Croak Properties.

50% of the units within the Medium Density land use designation on the Croak and Jordan properties shall have private, flat yards.

General Plan Land Use Map should be used in combination with the General Plan and applicable Specific Plans that contain policies and development standards for specific planning areas.

While the General Plan Land Use Map shows existing development and layout, only the land use designations for the land on which such development exists are part of the General Plan.

(1) Underlying Land Use - Medium Density Residential. 105 unit residential project approved on this site. (ORD. 09-15 and RESO. 166-15)